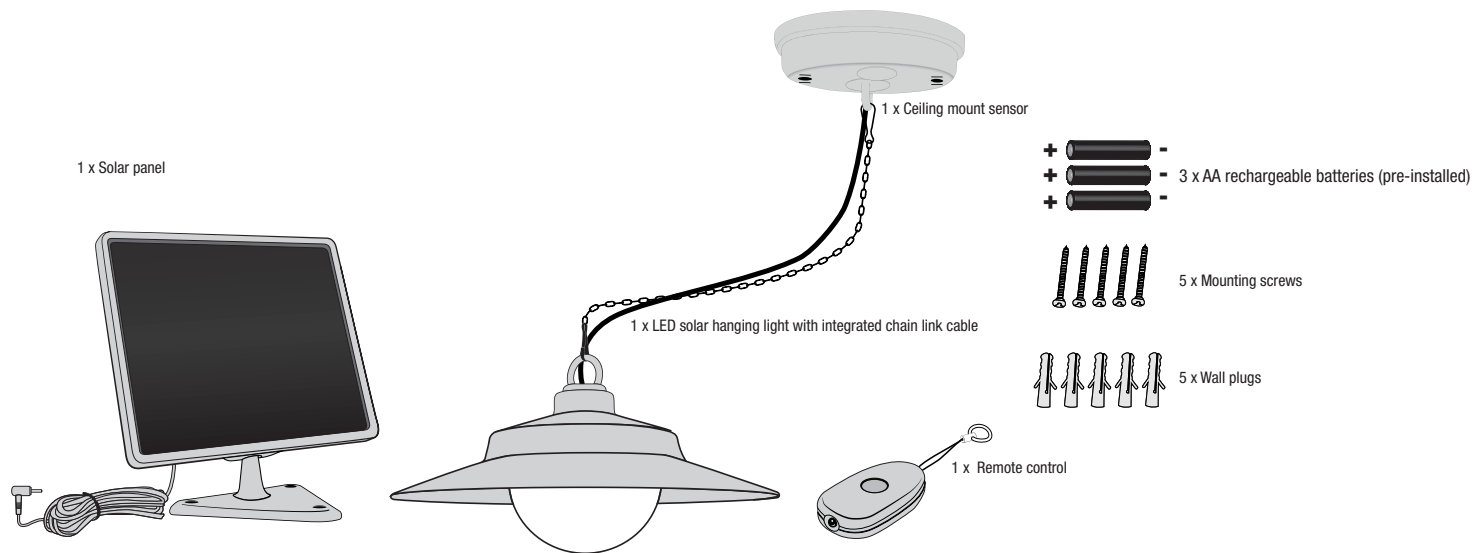




ASSEMBLY & INSTALLATION

SOLAR HANGING LIGHT WITH REMOTE CONTROL



Please read these instructions thoroughly prior to installation, then store in a safe place for future reference. If at any time you are unclear about this product, or require further assistance please do not hesitate to contact our trained professionals operating the customer support line at 1-888-478-6435 (English/French/Spanish language services, U.S.A. and Canada only), from Monday to Friday, 8:30 am to 5:00 pm Eastern Standard Time or email us at info@sunforceproducts.com.

SAFETY INFORMATION

- Your solar hanging light with remote is not a toy. Keep it out of reach of small children.
- Your solar hanging light must be installed in a dry environment.
- Your weather-resistant solar panel must be installed outdoors to receive light from the sun.
- If using a step ladder, you may require a second person to help install the solar hanging light.
- Prior to installation, lay out all components to ensure they correspond to the parts diagram on the cover page.
- Never look directly into the solar hanging light when illuminated.

BATTERY REPLACEMENT INSTRUCTIONS

When replacing the batteries for the solar hanging light, be sure to:

- Use rechargeable batteries only.
- Match the replacement battery specifications with the batteries that have been removed.
- Observe the correct polarity (+ and -) when installing the replacement batteries.
- Do not mix old and new batteries and Do not mix alkaline, standard (carbon-zinc) or rechargeable (ni-cad, ni-mh, etc.) batteries.
- The remote control contains a 'button cell' type battery. To access the battery, unscrew the screws on the underside of the remote control. The battery is visible once the two parts of the remote are separated. Simply remove the old battery and replace with a matching new battery while observing the correct polarity.

Refer to page 4, step 5 for further details.

CARE & MAINTENANCE

- From time to time, ensure the plug between the solar panel and ceiling mount is securely connected.
- It is advisable to adjust the angle of the solar panel to optimize the exposure of the sun during the winter months.
- The solar panel should be cleaned with a damp cotton cloth on a regular basis. This will ensure optimal performance and battery charging. Periodically, utilize the same technique to clean the solar hanging light.
- Never let any abrasive material come into contact with the solar panel.

WARRANTY

This product is covered under a one year limited warranty. Sunforce Products Inc. warrants to the original purchaser that this product is free from defects in materials and workmanship for the period of one year from date of purchase.

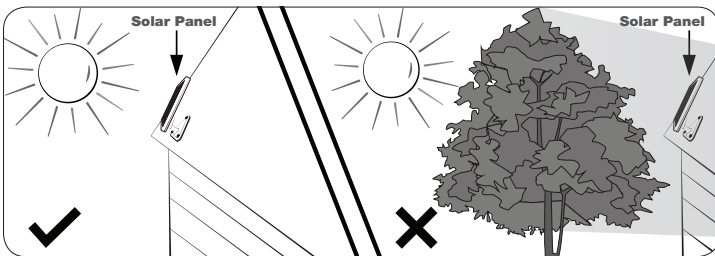
The included batteries are not covered under this warranty.

Proof of purchase including date, and explanation of complaint is required for warranty service.

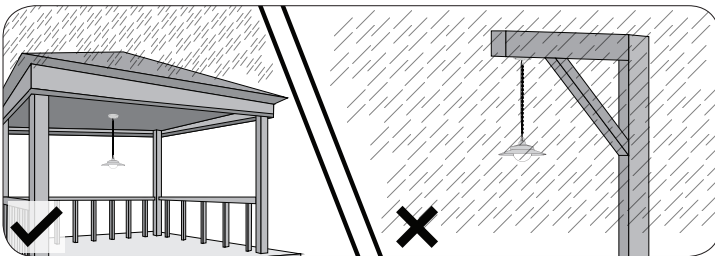
PRODUCT FEATURES

- Hanging light with chain link cable
- Remote control
- 4 Ultra bright LEDs
- Solar panel with 10 ft wire

PRE-INSTALLATION

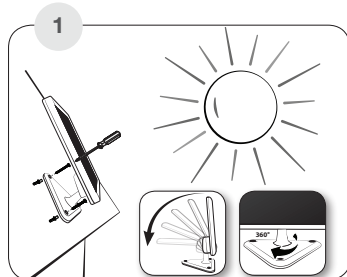


Ensure your solar panel is placed so that its exposure to the sun is optimized. Be aware of objects such as trees or property overhangs that may impede the panel's ability to generate a charge.



The solar hanging light is not weatherproofed. Only mount the hanging light in a dry environment not exposed to the elements.

INSTALLATION OF THE SOLAR PANEL



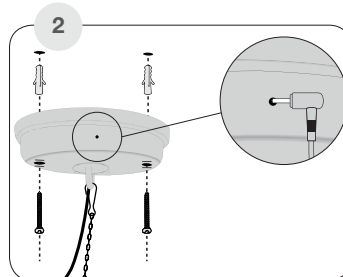
The angle of the solar panel can be adjusted utilizing the pivot point where the solar panel attaches to the bracket. This allows you to maximize sun exposure.

Optional: Use a power drill (not included) to create the holes on your chosen mounting surface. Use 3 of the included wall plugs and screws to fasten the solar panel to the surface.

NOTE: Recommended tools:
Power drill or screwdriver
Screw type: Phillips #2



INSTALLATION OF THE CEILING MOUNT

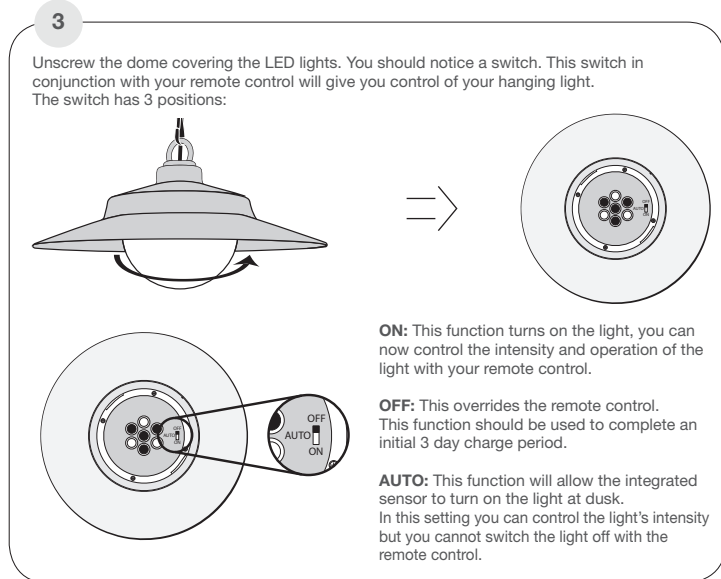


Install the ceiling mount with integrated chain to your chosen surface using the two remaining mounting screws and wall plugs (if required). Ensure the sensor on the ceiling mount is unobstructed as it could limit the remote control's ability to operate.

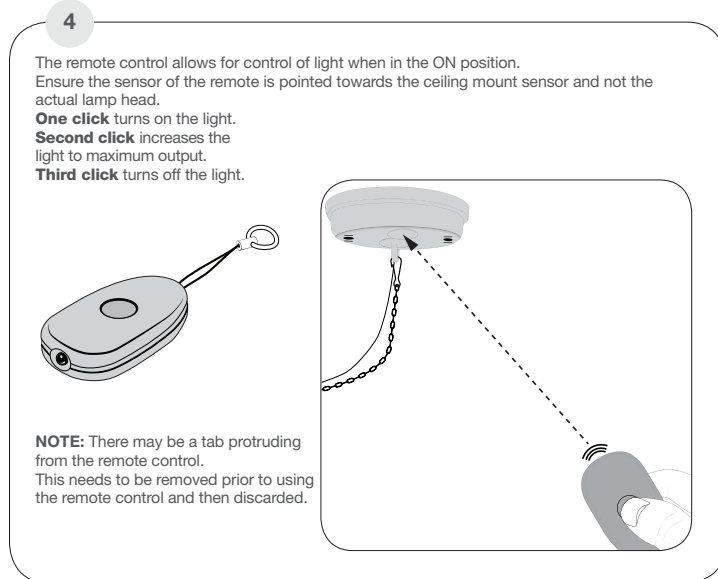
Your solar panel connects to the small 'jack-plug' located on the side of the ceiling mount. Ensure this connection is tight and secure.

NOTE: Prior to using your solar hanging light, the solar panel needs to be connected to the light for a period of 3 days. This initial charge should be done in the OFF position. After the third day, your included batteries will be fully charged and your light is ready for operation.

OPERATING THE SOLAR HANGING LIGHT

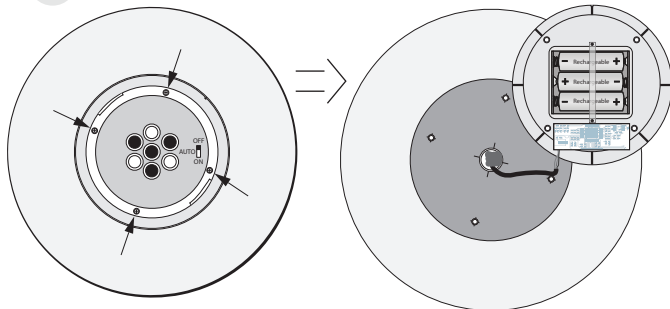


OPERATING THE REMOTE CONTROL



BATTERY REPLACEMENT

5

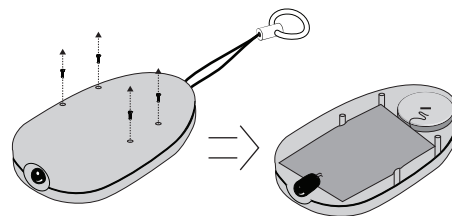


Should you need to replace the light's batteries, simply unscrew the dome. You will then have access to 4 screws around the edge of the light. Once you have unscrewed and lifted the LED light fitting, you will see the batteries.

Remove the two screws that hold down the battery bracket.

When replacing the batteries, observe the correct polarity and match the battery specifications with the batteries you have removed.

Use rechargeable batteries only.



Should you need to replace the battery in the remote control, simply identify and unscrew the four screws on the underside of the remote control. Once the screws have been removed, the remote control will come apart and reveal the 'button cell battery'. Remove the battery and replace with a new battery that matches the specifications of the one removed. Observe correct polarity when inserting the battery and screw the remote control back together.

FREQUENTLY ASKED QUESTIONS

1. Why does my light not come on at night?
2. My light on my remote does not light up when I press the button. What is wrong?
3. Why is there a small paper tab sticking out of my remote control?
4. Where should the solar panel be mounted?
5. Does the solar panel require direct sun to charge?
6. Can additional or extended cable wire for the solar panel be purchased?
7. What type of battery does my hanging light require to operate?
8. What type of battery does my remote control require to operate?
1. Make sure you have selected AUTO on the small switch inside the dome.
2. There is no light on the remote. The small bulb simply emits a signal.
3. This tab needs to be completely pulled free of the remote to allow the remote to function.
4. Mount your solar panel in a position that will enable the most amount of light to be absorbed (refer to page 2). In the Northern Hemisphere this is usually south facing.
5. The solar panel can charge the internal batteries in direct and indirect light. For best results, try to optimize your solar panel's sun exposure.
6. At this point there are no extensions available for the cable that connects the light to the solar panel. Any additions to the cable will void the warranty.
7. Your solar hanging light requires the use of 3 AA Ni-MH rechargeable batteries.
8. Your remote control requires the use of a 3V lithium (CR2032) button cell battery.