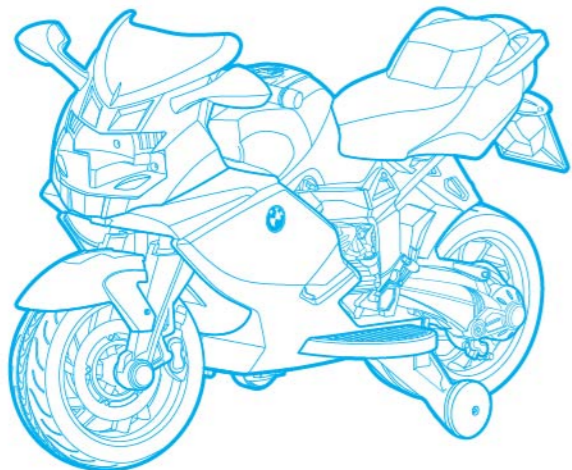


BMW K1300S Battery Operated Motorcycle

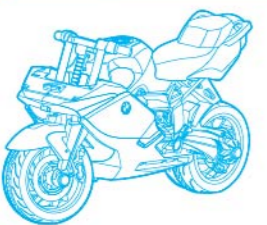
Please retain this information for future reference.

BMW K1300S



Please read the installation instructions carefully before installation

Parts list

	5. Handgrip soft tube x2	10. Screw x4 3.5x15mm
1. Motorcycle Body	6. Motorcycle head	11. Screw x1 4x15mm
Right 2. Left and right foot plates Left	7. Left and right wing mirrors	12. Charger
3. Stabiliser	8. Motorcycle tail plate	13. Key x2
4. Handlebar rubber sleeve x2	9. Screw x3 4x39mm	

TY5838

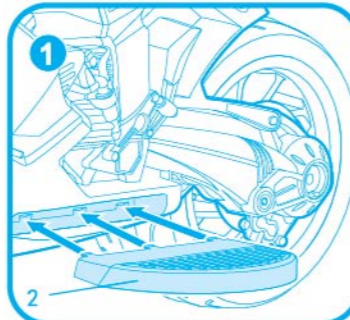
Xootz

CE UK CA

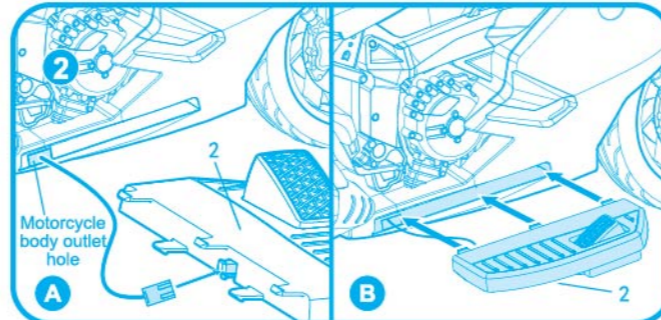
Wilton Bradley Ltd., Heathfield, Newton Abbot, TQ12 6TL, UK
Wilton Bradley Europe B.V., Barbara Strazilaan 201, 1083HN, Amsterdam, Netherlands
Design rights © 2016
Xootz® is a registered trade mark of WBL
Made in China

Assembly diagram

1. Installation of foot plates

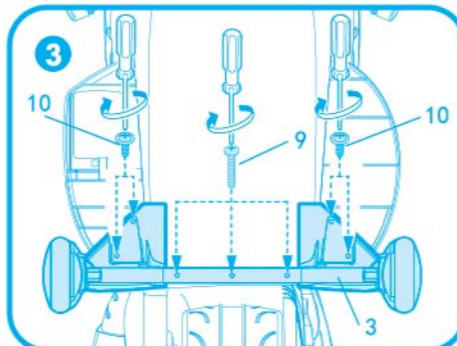


Install the left foot plate (part 2, left) as per the above diagram. Find each clip position before installation, and then press it firmly until each clip position is tight.



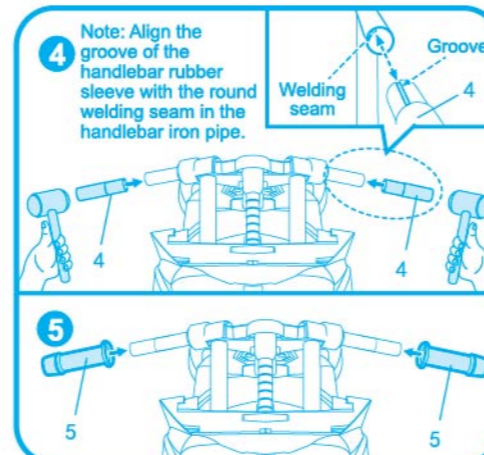
A Connect the plug from the motorcycle body outlet hole to the socket on the right foot plate. B Install the right foot plate (part 2, right) as per the above diagram, ensure that you tuck the plug cable into the motorcycle body outlet hole before installation, find each clip position, and then press it forcefully until each clip position is tight.

2. Installation of stabilisers



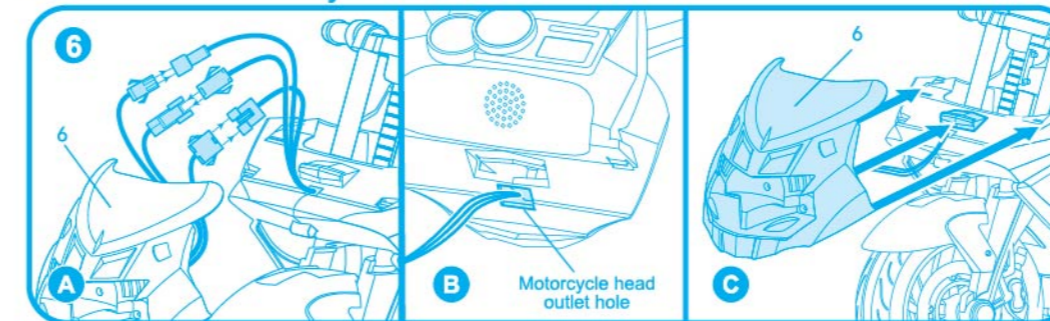
Position the stabiliser (part 3) as per the above diagram of the underside of the motorcycle. Tighten it with the screw (part 9) and fix the stabiliser and foot plate with the screw (part 10).

3. Installation of handle bars



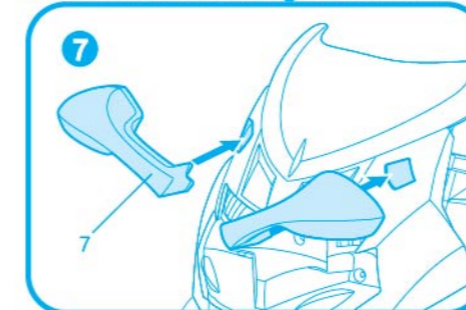
Use a rubber mallet to knock the handlebar rubber sleeve (part 4) into the handlebar iron pipe at both sides of the front forks. Insert the handgrip soft tube (part 5) into the handlebar at both sides.

4. Installation of motorcycle head

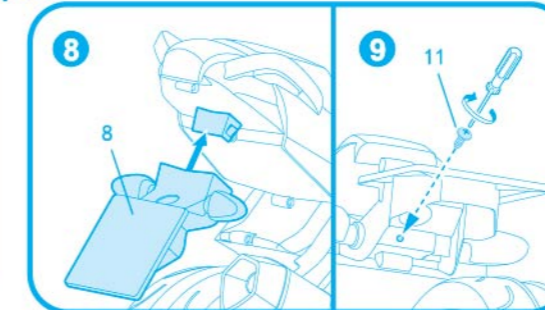


A Plug the wire plugs from the motorcycle head and body holes one by one, according to the colour. B Put all plugged plugs into the motorcycle head outlet hole. C Insert the motorcycle head (part 6) into the clip position and firmly clip into place.

5. Installation of wing mirrors and tail plate

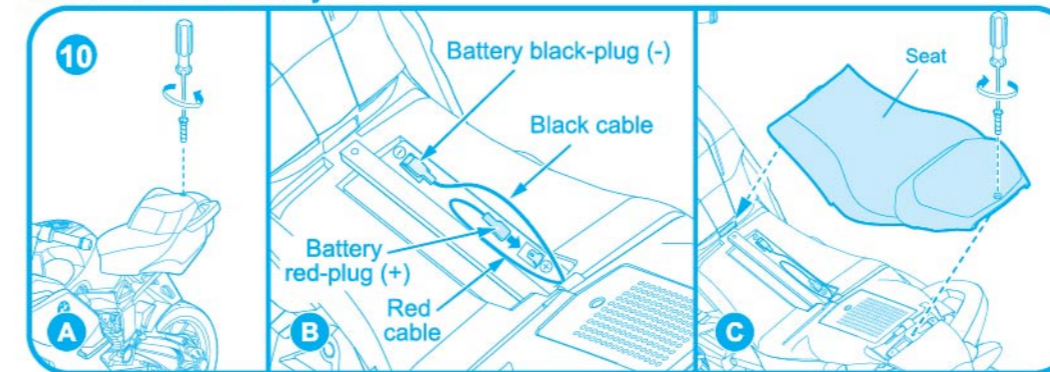


Insert the left and right wing mirrors (part 7) as per the above diagram and firmly clip into place.



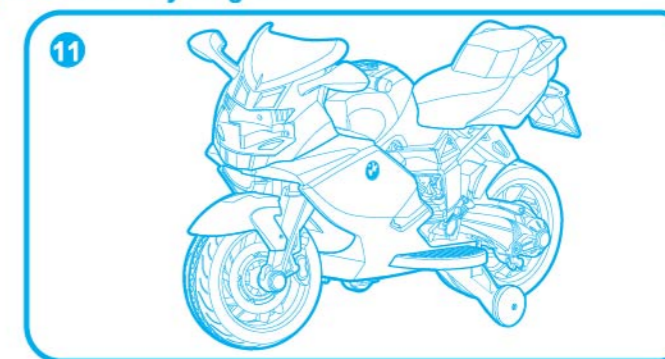
Insert the motorcycle tail plate (part 8) as per the above diagram, and fix it with the screw (part 11).

6. Installation of battery

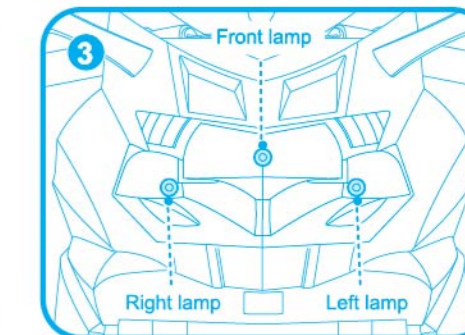
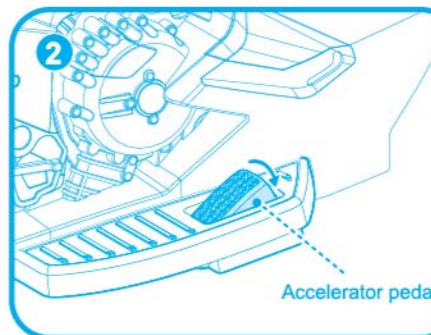
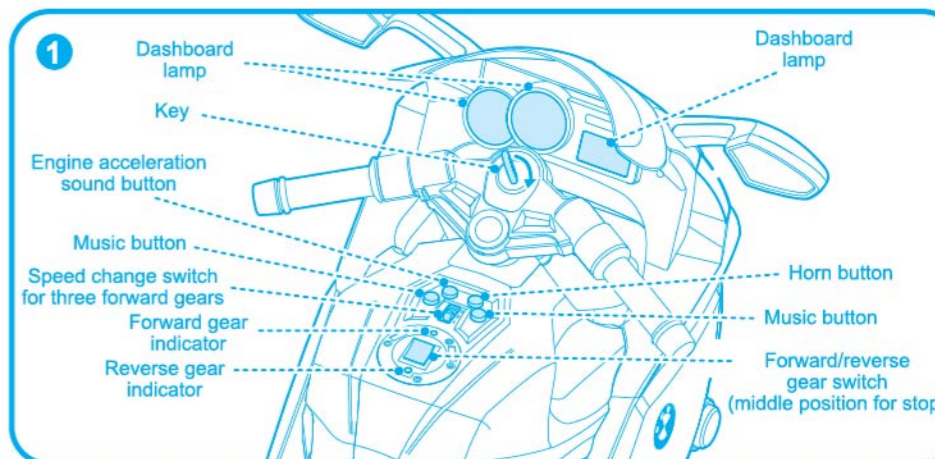


A Loosen the seat screw and open the seat to access the battery. B To connect the battery, insert the red cable terminal into the battery positive pole. Note: the red cable is connected to the battery red-plug (+), and the black cable is connected to the battery black-plug (-); always ensure you connect same colour battery cables and main distribution cables together, as connecting different colour cables could cause short circuit. C After connecting the battery, replace the seat as per the above diagram, and fix it with the seat screw.

7. Complete assembly diagram



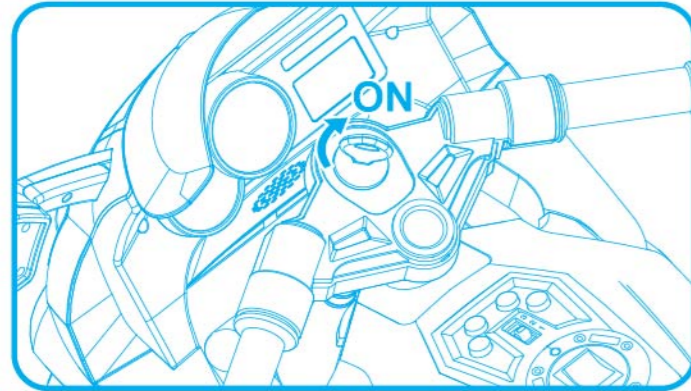
Operating function



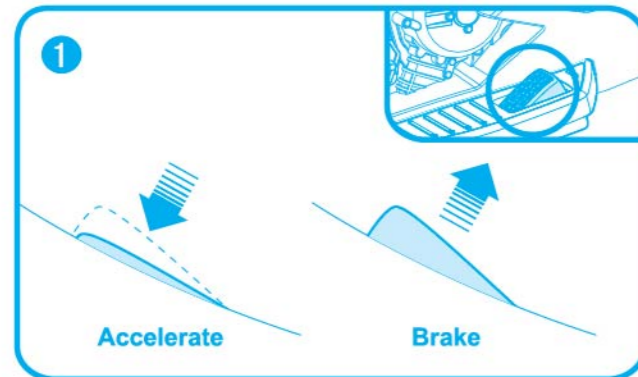
Before use

1. Ensure the battery is fully charged.
2. For the first charge we recommend charging the battery for 12 hours to ensure it is fully charged.
3. An adult should check the screws and fastenings.
4. Check that there are no wires or foreign objects tangled in the wheels, especially the driving wheel.

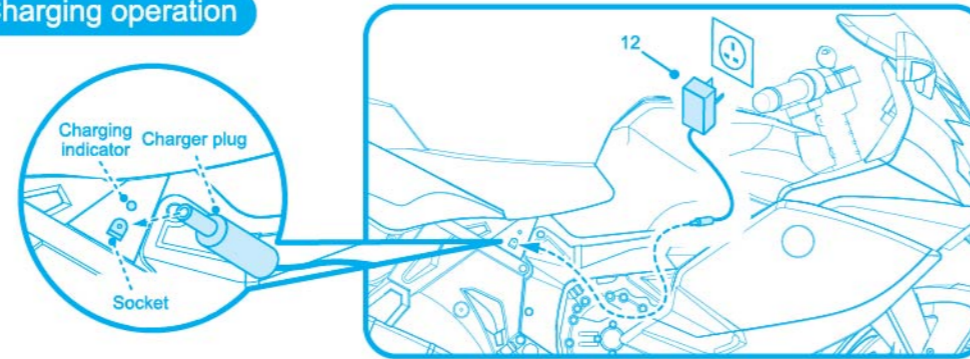
How to use



1. Ensure you are comfortably seated and wearing appropriate footwear.
2. When ready, turn the key in the ignition to the on position as per the above diagram, ensure your foot is off of the accelerator pedal, otherwise the motorcycle will not work until it is turned off and back on again. The motorcycle will turn on, the starting sound will play and the dashboard will light up.
3. The buttons on the fuel tank can now be operated. Once a sound button has been pressed, the front left and right lamps will illuminate with the sound.
4. Push the gear switch to the intended direction of travel. Please ensure you stop completely before changing direction.
5. When forward is selected, there are three speed settings. You can change the speed by pushing the speed change switch into settings 1, 2 or 3. When travelling forward the front lamp will be illuminated.
6. When reverse is selected, only speed setting 2 is possible.
7. **1** To accelerate press the accelerator pedal, to brake lift off of the accelerator pedal completely and the motorcycle will begin to brake and gradually come to a stop.

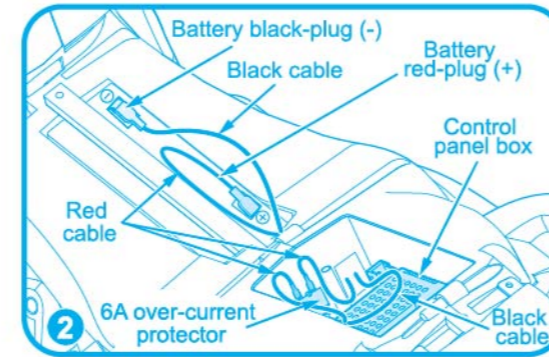
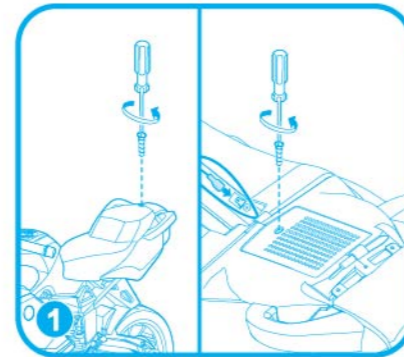


Charging operation



Ensure that the battery is only recharged by an adult.
Please ensure you regularly check the charger and battery for any damage before use. If damaged, please contact our after sales team (information on last page)

1. The charging socket is located under the seat at the right side of the motorcycle.
2. When charging, the charging indicator will be illuminated.
3. Once the battery is depleted, you should recharge the battery for 9-10 hours. Do not charge for more than 15 hours. Do not leave unattended when charging.
4. While charging, both the charger and the battery will be slightly warm.



WARNING Risk of fire.
Do not bypass. Replace only with 6A.

Operation of over-current protector

1. The over-current protector is located under the seat with the battery, this can be accessed by loosening the seat screw and the control panel box cover (as shown in Figure 1).
2. When the motorcycle is overloaded, the over-current protector automatically disconnects the circuit (for protecting the circuit); when the circuit fault is removed, the over-current protector automatically re-connects the circuit.
3. When the battery has power but the bike is unable to be driven, please check the troubleshooting section of this manual.

WARNING!

Before use, please ensure all users and/or supervisors have read and fully understand the instructions of use and safety. For ages 3-7. This toy is unsuitable for children under 3 years due to its maximum speed.
Maximum weight: 30kg.
Adult supervision and assembly are required.
Protective equipment should be worn such as helmets, wrist guards and knee and elbow pads.
Always wear appropriate footwear when operating this product.
This toy should be used with caution since skill is required to avoid falls or collisions causing injury to the user or third parties.
This product is only for use on privately owned property, with the owners' permission.
It is prohibited to use this product on the road under section 143(1)(a) Road Traffic Act 1988.
It is prohibited to use this product on public footpaths under section 72 of the Highway Act 1835.
Ensure that the product is in good working order before use.
Learn to stop the product safely, always use the product within your limits.
Use well away from traffic and other hazards.
Only use on smooth, flat surfaces.
Do not use in the rain or on wet surfaces.
Do not use in the dark.
Do not touch the wheels with your hands, feet or other objects whilst in operation.
Store the product in a warm dry place.

Battery maintenance

1. Please only use the charger supplied with the toy. Chargers not supplied by the manufacturer may cause damage to the battery and/or toy.
2. If the product is not going to be used for a long period of time, disconnect the battery until the product is required.
3. When not in use, recharge the battery every 30 days.

Technical specification

Applicable age	3-7 years	
Weight limit	30kg	
Power supply	Rechargeable lead-acid	
Battery specifications	DC 12V/3.5AH	Speed settings: 1: 3.3, 2: 3.7, 3: 4.1 km/h
Charging source	Input AC 100V-240V 50Hz/60Hz	Output DC 15V/400mA
Battery charging time	Charging time: 9-10 hours	Average run time: 1-2 hours*

*Dependent on terrain, user weight and temperature

Troubleshooting

Trouble	Treatment
The motorcycle won't move.	<ol style="list-style-type: none"> 1. Make sure the forward/reverse switch is selected and is not in neutral. 2. Check the battery is correctly installed with the positive and negative plugs matched and connected properly. 3. Check that the accelerator pedal is not stuck. 4. Check whether there is debris stuck in the wheels.
The motorcycle moves very slowly.	<ol style="list-style-type: none"> 1. Charge the battery. 2. Check whether there is debris stuck in the wheels. 3. Ensure the user is below the max user weight. 4. Check the charger is working correctly.
The battery will not fully charge.	<ol style="list-style-type: none"> 1. Check the charger is working correctly. 2. Check the battery is correctly installed with the positive and negative plugs matched and connected properly. 3. Check that the charger is correctly plugged into the wall socket and into the motorcycle charging port.

After sales

Please keep your purchase invoice as proof of purchase for after sales purposes. Please make sure you have the following information available when contacting us:

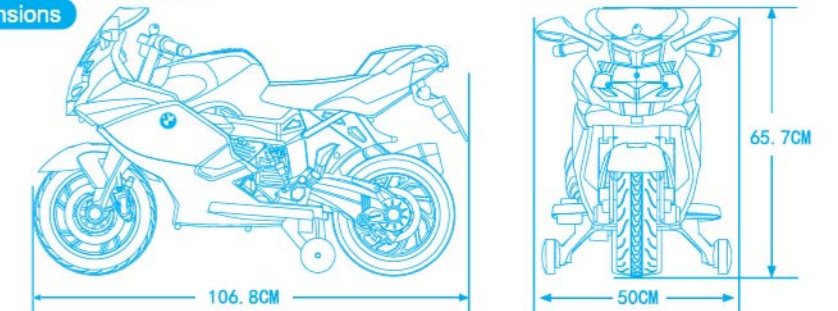
Name
Address
Email address
Telephone number
Proof of purchase
Evidence of the issue
Contact us by telephoning 0345 576 0280 or email: support@jsf-tech.com

Warranty

This product is covered under a 12 Month Manufacturer's Defect Warranty. If you notice a manufacturing fault within the first 12 months from date of purchase, please contact our after sales service. The following conditions are not covered by the warranty:

1. The problem is caused by user misuse. This includes faults caused by crashes.
2. The damage is caused by modification or unauthorised repairs by users.
3. The damage is caused from improper maintenance by users.
4. The damage is caused by water or has clearly been used in a way that is not advised in this user manual.
5. You have no proof of purchase.

Dimensions



The BMW logo and the BMW wordmark are trademarks of BMW AG and are used under license. They are used by Chi Lok Bo Toys Company Limited under license. Manufacturer: Chi Lok Bo Toys Company Limited
Address: Daji Industrial Park, Shipai Town, Dongguan City, Guang dong Province, China