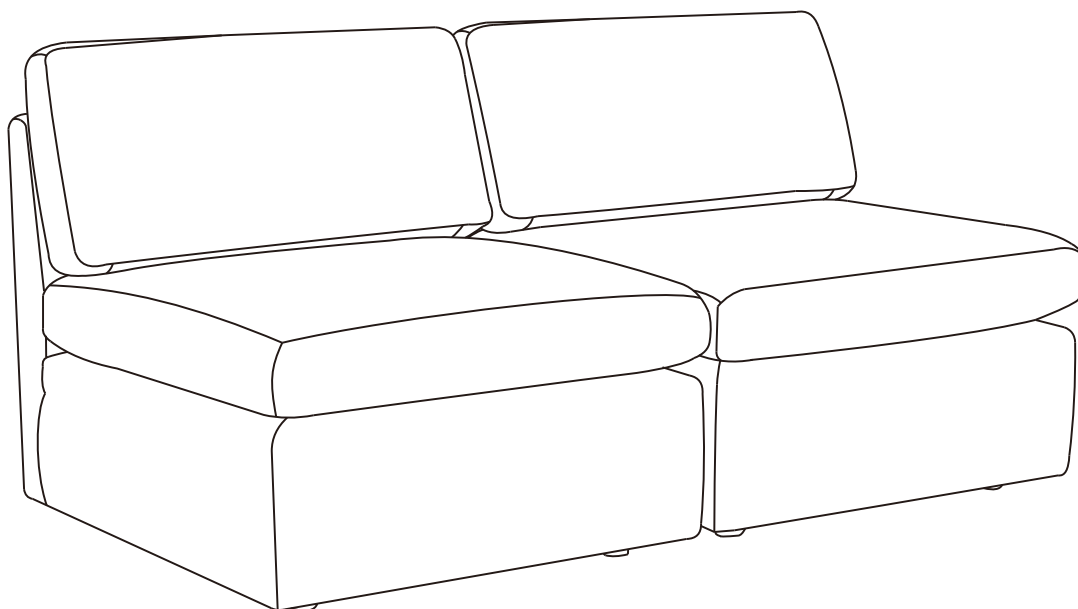




## Assembly Manual

*Model Number: KF.92717B 2-Pack Armless Chair*



***THIS ASSEMBLY MANUAL CONTAINS IMPORTANT SAFETY INFORMATION.  
PLEASE READ AND KEEP FOR FUTURE REFERENCE.***

---

For Cole & Rye Member Care call: 1-877-344-0900

9:00am-4:00pm, Monday through Friday, Eastern Time Zone, English Only.

## **WE'RE HERE TO HELP!**

If you have any questions or concerns the Cole & Rye Member Care Team will be happy to assist you!

Toll-free: 1-877-334-0900

Email: [ConsumerCare@ColeandRye.com](mailto:ConsumerCare@ColeandRye.com)

## **Important Safety Information**

- *Please read all instructions carefully before assembling this furniture.*
- *For your safety, assembly by two or more adults is strongly recommended.*

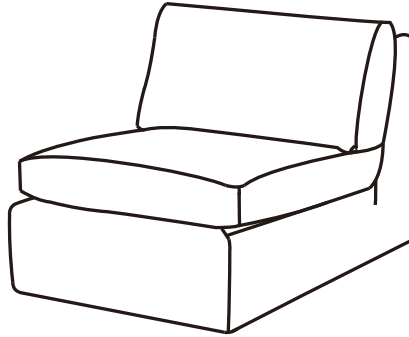
## **Care and Cleaning**

- *We recommend using a Water Based Cleaner, 'W' rating, and spot clean using the foam only from a water-based cleaning agent such as a mild detergent or non-solvent upholstery shampoo product. Please apply foam with a soft in a circular motion. Vacuum when dry.*
- *We recommend that you do not place your furniture in direct sunlight, and if possible, try to keep your new furniture away direct sunlight by approximately 2 feet (60 centimeters) to help prevent any fading / discoloring issues over time.*

---

## Main Components

A: Armless Chair Unit - Qty 2



**A** x 2

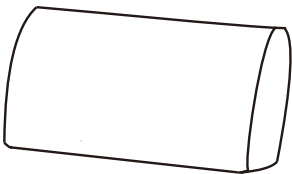
## Part Lists

1: Back Cushion - Qty 2

2: Seat Cushion - Qty 2

3: Non-Slip Leg - Qty 8

4: Rubberband Connector - Qty 4



**1** x 2



**2** x 2



**3** x 8

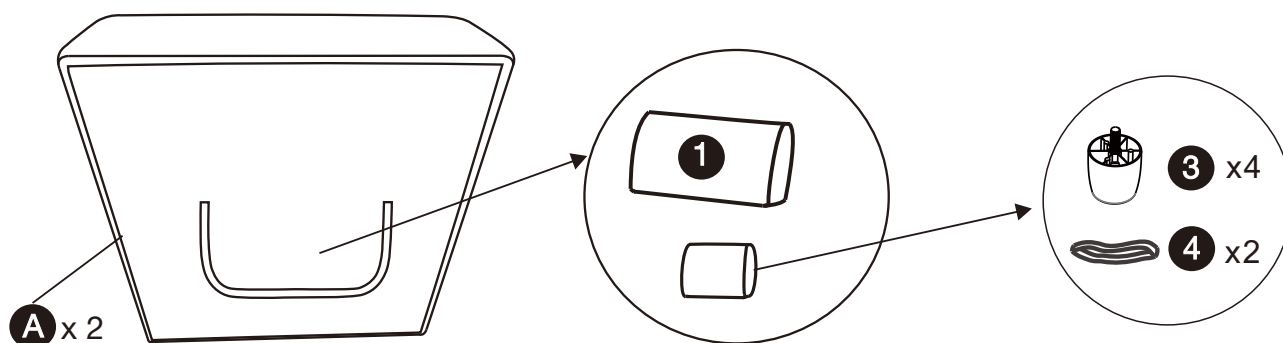


**4** x 4

---

## Assembly Steps

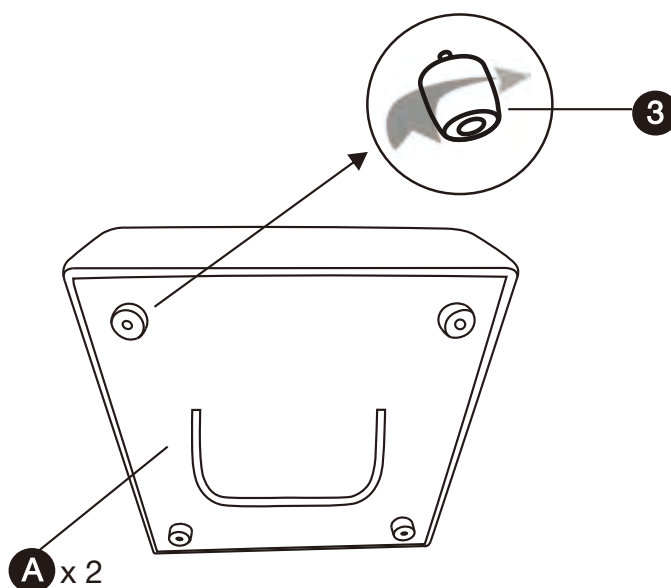
1



Carefully place the Armless Chair (A) on a soft smooth surface and then remove Back Cushion (1) and the package of Non-Slip Legs (3) & Rubberband Connectors (4) from the underneath zippered pocket of the Chair (A).

---

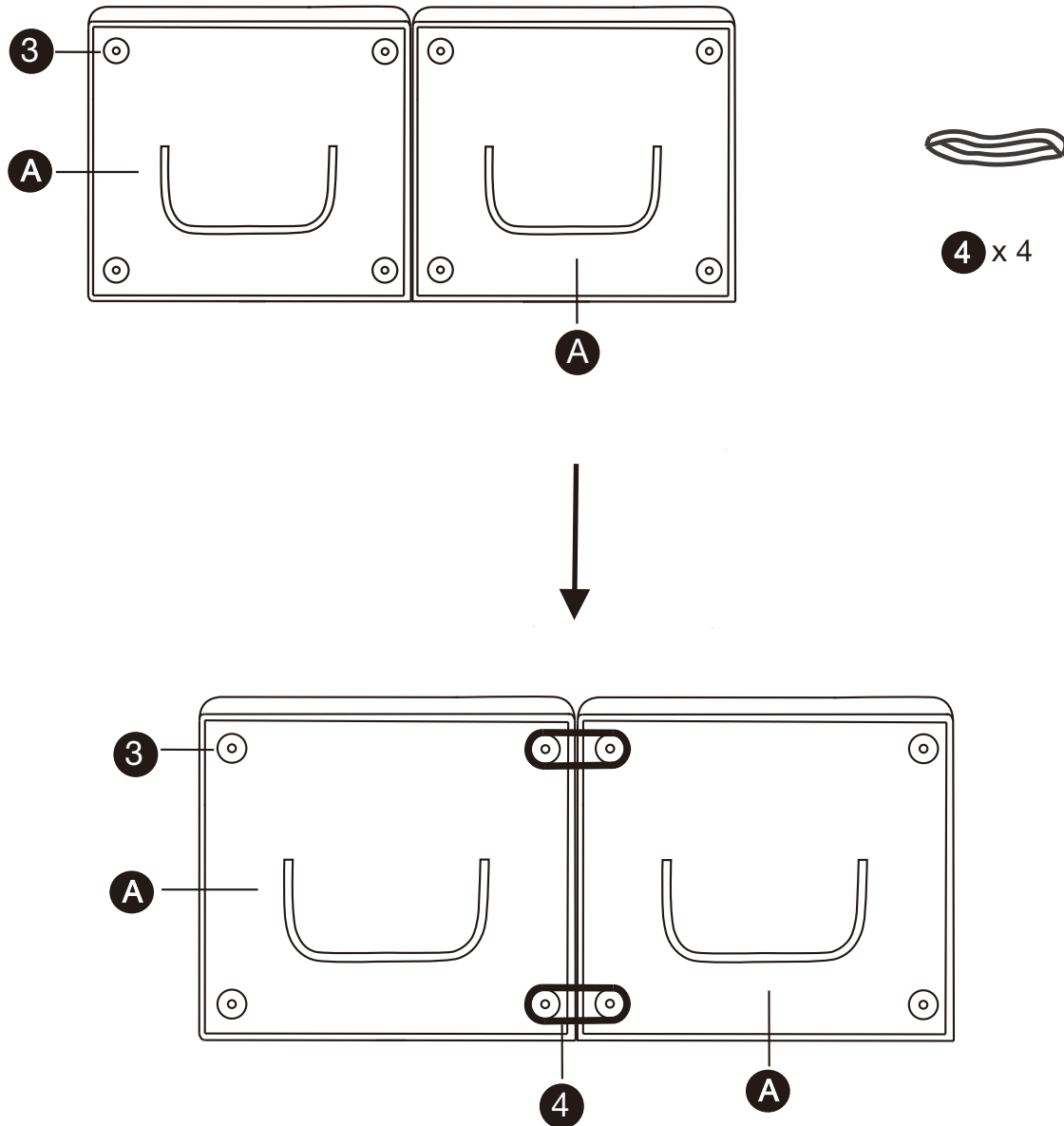
2



Screw the Non-Slip Legs (3) into bottom corners of the Armless Chair (A).

---

## Optional Assembly Step

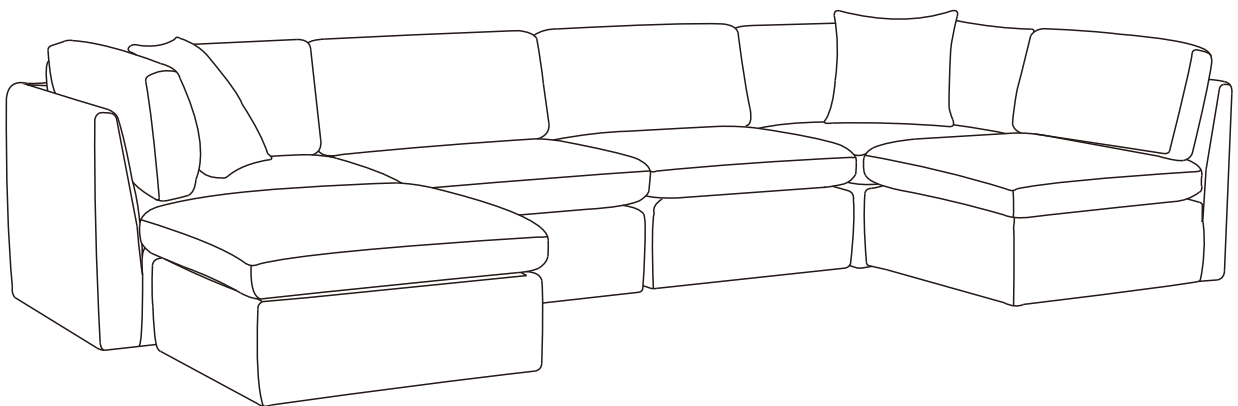
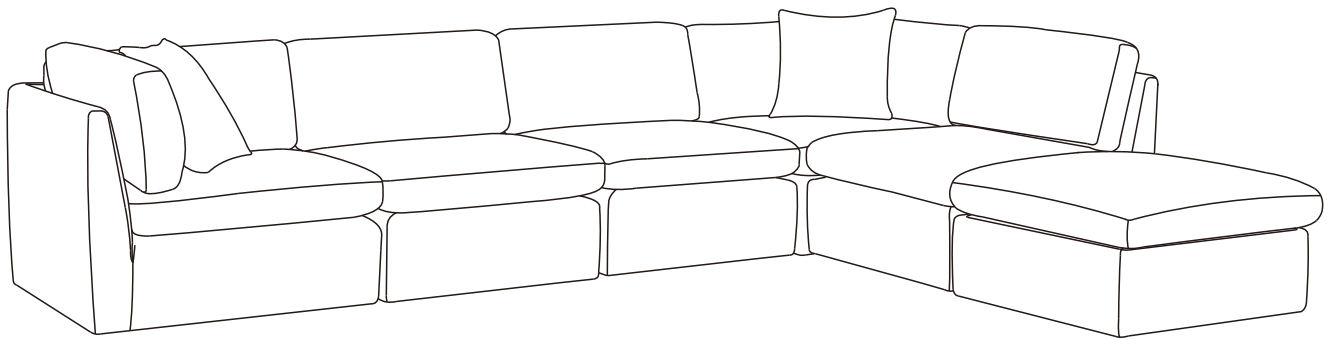


Secure the Rubberband Connectors (4) firmly to the adjacent Non-Slip Legs (3).

---

**Arrange the armless chairs with the other Lounge Couch pieces to fit your space.**

**Here are a few configuration ideas:**



**Now relax and enjoy your new Lounge Couch modular seating group.**