

Roku Express Quick Start Guide

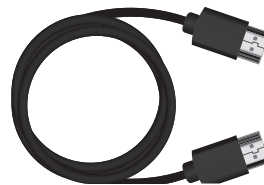
What's included



Roku Express streaming player



Power adaptor



High Speed HDMI® Cable



Removable adhesive strip



Two AAA Duracell® batteries



Remote



USB power cable

Details



HDMI USB power Reset



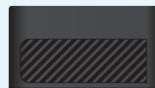
Front



Top

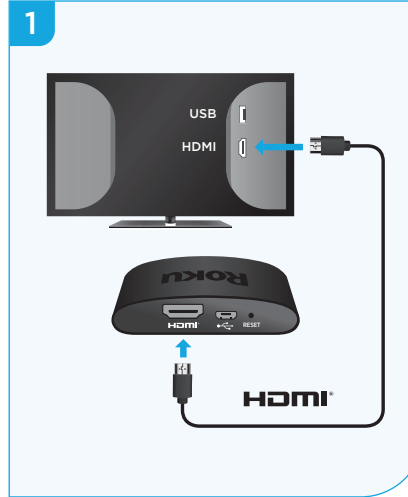


Back



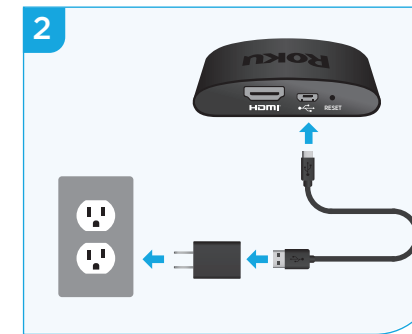
Bottom

Setup



STEP 1: Connect to TV

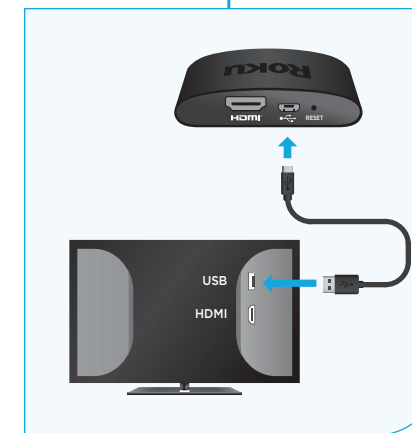
Use the included High Speed HDMI® Cable (or your own HDMI® cable) to connect your streaming player to your TV.



STEP 2: Connect to power

For the best experience, use the included USB power cable and adaptor to connect your streaming player to a wall outlet.

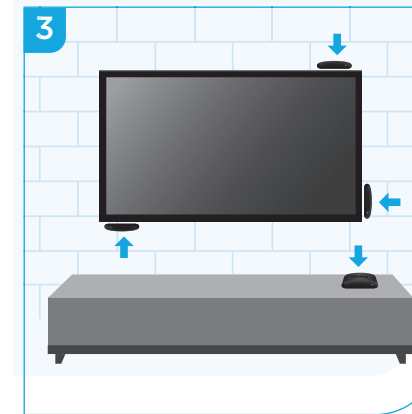
OR



Or use the included USB power cable to connect to the USB port on your TV.



NOTE: See a red light on your streaming player? That means the USB port on your TV is not providing enough power. Use the included power adaptor instead. For help, visit [go.roku.com/lowpower](https://www.roku.com/lowpower)



STEP 3: Position Roku® streaming player

Place the streaming player near your TV.

The streaming player can be attached to your TV with the included double-sided adhesive strip. The strip is for single-use and can be removed.



DO:

Top view

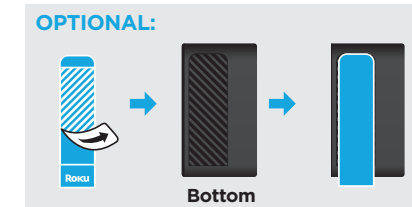
DO make sure that the front of your streaming player has direct line of sight with your remote control.



DO NOT:

DO NOT place your streaming player behind the TV.

DO NOT place inside a TV cabinet. Doing so may cause overheating.

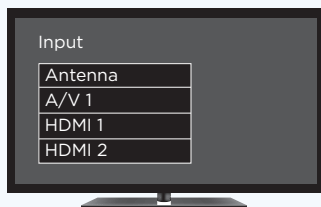


OPTIONAL:

Bottom

For proper use, see **adhesive strip instructions** located at the end of this Quick Start Guide.

4

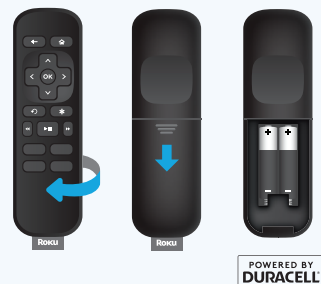


STEP 4: Power on TV and select input

Use your TV remote to power on your TV and select the input you used to connect your streaming player.

For help on how to select the correct input, visit go.roku.com/selectinput

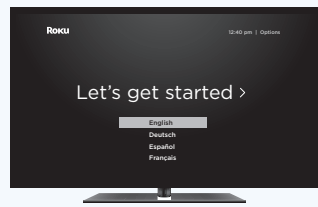
5



STEP 5: Insert batteries

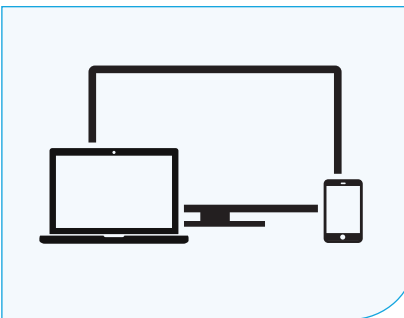
On the back side of the remote, slide open the battery cover. Insert included Duracell® batteries placing the negative (-) ends in first.

6



STEP 6: On-screen setup and activation

Follow the instructions on your TV screen.



Activate your streaming player by using your computer or smartphone to link to a Roku account.

NOTE: Roku does not charge for activation support – beware of scams.

Common questions

Why do I need to create a Roku account?

Before you can start streaming, channels must be downloaded and installed on your streaming player. You'll need a Roku account to access the Roku Channel Store, manage your subscriptions, view your purchase history, and add a payment method. For more info, visit go.roku.com/whyaccount

Why do I need to enter a credit card?

Saving a payment method makes it easy to rent or buy movies on demand, subscribe to popular services, and enroll in free trials. Charges will not be made without your authorization. For more information, visit go.roku.com/paymenthelp

What should I do if my streaming player is not connecting to my wireless network?

Your streaming player connects to your wireless network the same as your laptop or smartphone. If these other devices can access the internet, then your streaming player should be able to do the same. Make sure to select the same network name, and enter the same password you use with the other devices. Remember that passwords are case-sensitive and easy to enter incorrectly. For more help, visit go.roku.com/wireless

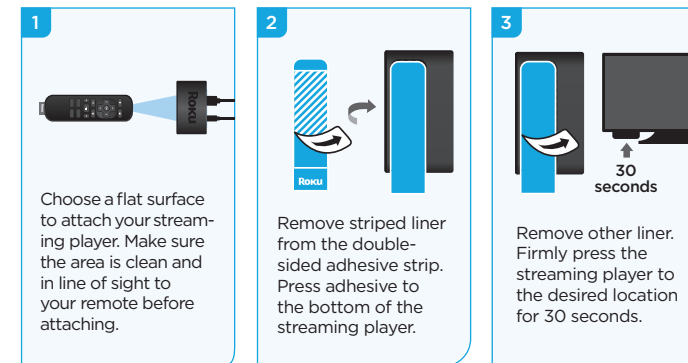
Can I take my Roku streaming player with me when I travel?

Yes, you can bring your streaming player and watch your favorite entertainment when you travel! Remember to also bring the USB power adaptor (like your phone charger), remote, and any cables you use to connect your streaming player at home. Make sure your destination has a good internet connection. You may need a computer or smartphone to help connect your streaming player to a new wireless network. For more details, visit go.roku.com/travelwithroku

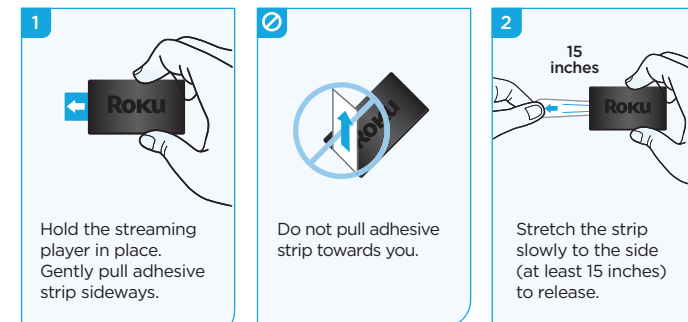
Adhesive strip instructions

You have the option of attaching your streaming player to your TV using the included double-sided adhesive strip. This strip is removable and will not leave a sticky residue. However, it can only be used one time! Keep in mind that your streaming player requires a direct line of sight with your remote control. To order more strips, go to roku.com/accessories

To apply adhesive strip



To remove adhesive strip



**Need more help
getting started?**

go.roku.com/express



Video
tutorials



Wireless
help

**Getting the most
out of your Roku
streaming player.**

go.roku.com/usingroku



Add
channels



Mobile
app

**Tips, what's
streaming for free,
and more...**

blog.roku.com



Roku Blog



Roku

© 2019 Roku, Inc. All rights reserved. ROKU and the ROKU logo are the registered trademarks of Roku, Inc. HDMI, the HDMI logo, and High-Definition Multimedia Interface are the trademarks or registered trademarks of HDMI Licensing, LLC. All other logos and trademarks herein not owned by Roku, Inc. are the property of their respective owners.

