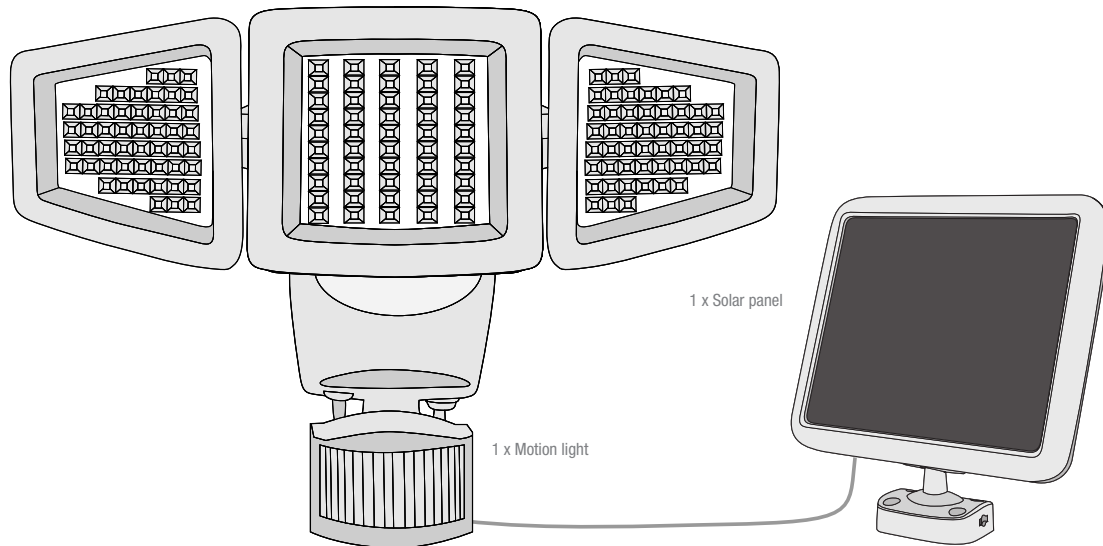


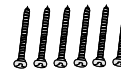


## ASSEMBLY & INSTALLATION

# 150 LED TRIPLE HEAD SOLAR MOTION ACTIVATED LIGHT



3 x AA rechargeable batteries  
(pre-installed)



6 x Mounting screws



6 x Wall plugs

**Please read these instructions thoroughly prior to installation, then store in a safe place for future reference.**

If at any time you are unclear about this product, or require further assistance please do not hesitate to contact our trained professionals operating the customer support line at 1-888-478-6435 (English/French/Spanish language services, U.S.A. and Canada only), from Monday to Friday, 8:30 am to 5:00 pm Eastern Standard Time or email us at [info@sunforceproducts.com](mailto:info@sunforceproducts.com).

SAFETY INFORMATION

- Your motion light is not a toy. Keep it out of reach from small children.
- Your motion light and solar panel are both weather-resistant.
- You can mount your motion light indoors, but your solar panel must be installed outdoors to receive light from the sun.
- If using a step ladder, you may require a second person to help install the solar motion light.
- Prior to installation, lay out all components and check against the part list section in this manual.
- Never look directly into the solar motion light when illuminated.

BATTERY REPLACEMENT INSTRUCTIONS

- When replacing the batteries, be sure to:
- Use rechargeable batteries only.
  - Match the replacement battery specifications with the batteries that have been removed.
  - Observe the correct polarity (+ and -) when installing the replacement batteries.
  - Do not mix old and new batteries and Do not mix alkaline, standard (carbon-zinc) or rechargeable (ni-cad, ni-mh, etc.) batteries.
- Refer to page 3, step 9 for further details.**

CARE & MAINTENANCE

- From time to time, ensure the plug between the solar panel and light is securely connected.
- It is advisable to adjust the angle of the solar panel to optimize the exposure of the sun during the winter months.
- The solar panel should be cleaned with a damp cotton cloth on a regular basis. This will ensure optimal performance and battery charging. Periodically, utilize the same technique to clean the lenses of the motion lights.
- Never let any abrasive material come into contact with the solar panel.

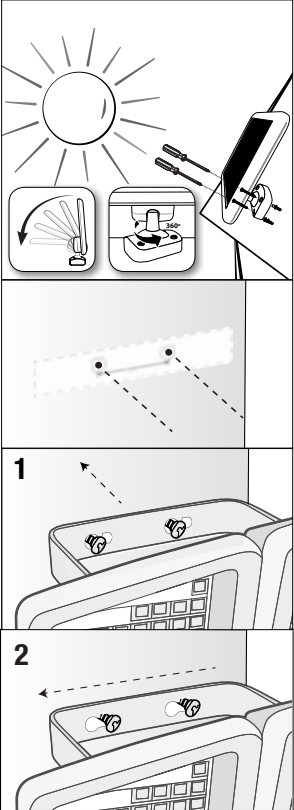
WARRANTY

This product is covered under a one year limited warranty. Sunforce Products Inc. warrants to the original purchaser that this product is free from defects in materials and workmanship for the period of one year from date of purchase. The included batteries are not covered under this warranty. Proof of purchase including date, and explanation of complaint is required for warranty service.

PRODUCT FEATURES

- 50 LEDs per lamp head
- Adjustable time and distance settings
- Adjustable motion sensor
- Solar panel with 15 ft wire

INSTALLATION



**NOTE:** Recommended tools:  
Power drill or screwdriver  
Screw type: Phillips #2



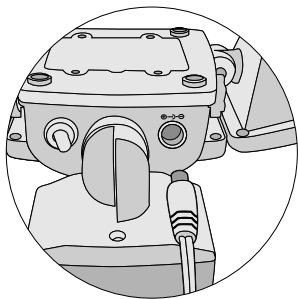
- 1 Ensure your solar panel is placed so that its exposure to the sun is optimized. Be aware of objects such as trees or property overhangs that may impede the panel's ability to generate a charge. The angle of the solar panel can be adjusted utilizing the pivot point where the panel attaches to the bracket. This allows you to maximize sun exposure.
- 2 Optional: Use a power drill (not included) to create the holes on your chosen mounting surface. Use 4 of the included wall plugs and screws to fasten the solar panel to the surface.
- 3 Place the mounting bracket template (refer to template shown below or use provided insert) over the desired mounting surface. Mark the screw hole locations indicated by the >< symbol.  
Use a power drill (not included) to drill the holes on your chosen mounting surface.
- 4 Insert the two remaining screws and wall plugs into the surface, leaving 3.2 mm (1/8 in) of space between the screw heads and the wall. Place the motion light's mounting bracket onto the screw heads (1).
- 5 Lock the bracket into place by shifting it horizontally (2).

MOUNTING BRACKET TEMPLATE INSTRUCTIONS

1. Cut out the template or use the provided insert.
2. Mark the screw hole locations (X) using a pencil or drill.
3. Drill holes in the marked locations.

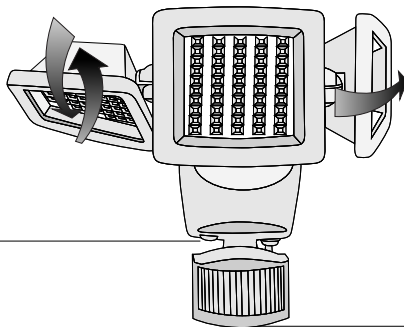


6

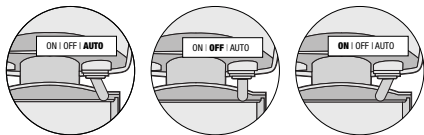


Connect the wire from the solar panel into the socket located under the light fixture. Your solar motion light will now begin to charge.

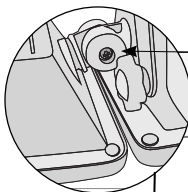
Once the motion light is installed, the side lamp heads can be adjusted independently in a variety of ways for optimal lighting coverage.



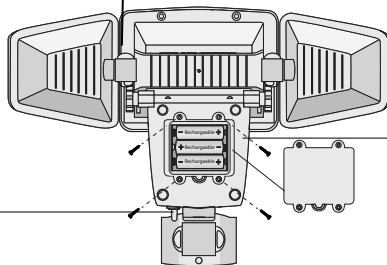
7



Prior to using your solar motion light, the solar panel needs to be connected to the light for a period of three days. This initial charge should be done in the OFF position. After the third day, your included batteries will be fully charged and your solar motion light is ready for operation. Place the light in the AUTO position. The ON position acts to override the motion activation function. This will allow a limited period of constant illumination.



! This screw can be tightened to secure the positioning of the side lamp heads. Do not over-torque this screw as this action can damage the plastic joint.



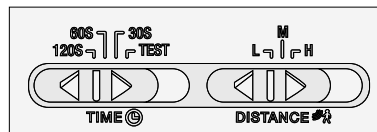
8

Two different control switches adjust the light's illumination time and range of motion detection.

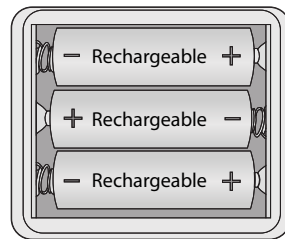
**TIME:** Determines the duration of the light once motion is detected: 30 seconds, 60 seconds or 120 seconds.

• **Test:** Allows the positioning of the light's motion sensor to be tested day or night. Once the motion sensor is in the desired position, attempt to trigger the light by moving in the intended detection zone. If the light illuminates, the motion sensor is positioned correctly. You are now ready to move the switch to the preferred duration option. The light will now only turn on in darkness.

**DISTANCE:** Controls the distance of the range of motion detection: low, medium or high.



9



Batteries are located in the battery housing behind the light fixture. Select the OFF position on the light prior to opening the battery housing. Remove the four screws to reveal the batteries.

When replacing the batteries, observe the correct polarity and match the battery specifications with the batteries you have removed. **Use rechargeable batteries only.**

## FREQUENTLY ASKED QUESTIONS

---

- |   |  |
|---|--|
| <ol style="list-style-type: none"><li>1. Where should the solar panel be mounted?</li><li>2. Does the solar panel require direct sun to charge?</li><li>3. Can additional or extended cable wire for the solar panel be purchased?</li><li>4. Why does the solar motion light appear to “strobe” or flash?</li><li>5. Will decorative or street lights have an effect on the motion sensor’s ability to operate?</li><li>6. What type of battery does my solar motion light require to operate?</li></ol> | <ol style="list-style-type: none"><li>1. Mount your solar panel in a position that will enable the most amount of light to be absorbed (refer to Step 1 on page 2). In the Northern Hemisphere this is usually south facing.</li><li>2. The solar panel will charge the internal batteries in direct and indirect light. For best results, try to optimize your solar panel’s sun exposure.</li><li>3. At this point there are no extensions available for the cable that connects the light to the solar panel. Any additions to the cable will void the warranty.</li><li>4. A rapidly flashing light is caused by undercharged batteries. Turn the solar motion light’s switch to the “OFF” position and charge for two full sunny days to bring the batteries to full charge. After two days, return the switch to the “AUTO” position.</li><li>5. Yes, the sensor of the solar motion light is light-sensitive. For nighttime usage, ensure no other light activates the motion sensor.</li><li>6. Your solar motion light requires the use of 3 AA Ni-MH rechargeable batteries.</li></ol> |
|---|--|