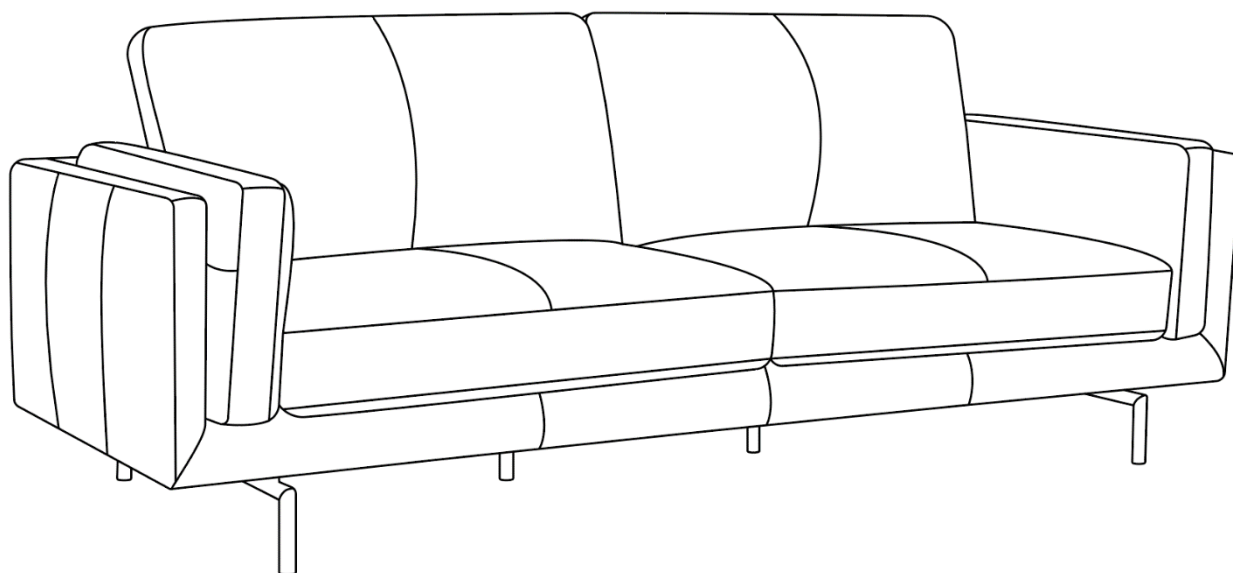





Assembly Instructions & User's Manual
for
Member's Mark Asher Modern Leather Sofa



THIS ASSEMBLY MANUAL CONTAINS IMPORTANT SAFETY INFORMATION.
PLEASE READ AND KEEP FOR FUTURE REFERENCE.

Table of Contents

Quality Statement.....	3
Important Safety Information	3
Before Assembly	3
Care & Use	3
Package Contents	4
Product Information	5
Components	5
Hardware	5
Tools	5
Step 1	6
Step 2	6
 Warning.....	7
Troubleshooting.....	7
Care & Use Instructions	7
Storage Instructions.....	7
Warranty Information	8

Quality Statement

Questions or Comments?

We would love to hear about your Member's Mark experience! Visit us at:
samsclub.com/membersmarkhelp

Important Safety Information

- Please read all instructions carefully before assembling this product.
- Where applicable, and for your safety, assembly by an adult is strongly recommended.
- Use only vendor-supplied hardware to assemble this item. Using unauthorized hardware could jeopardize the structural integrity of the item.
- Hardware may loosen overtime. Periodically check that all connections are tight.
- Keep small parts and hardware out of the reach of children.
- Keep instructions for future use.

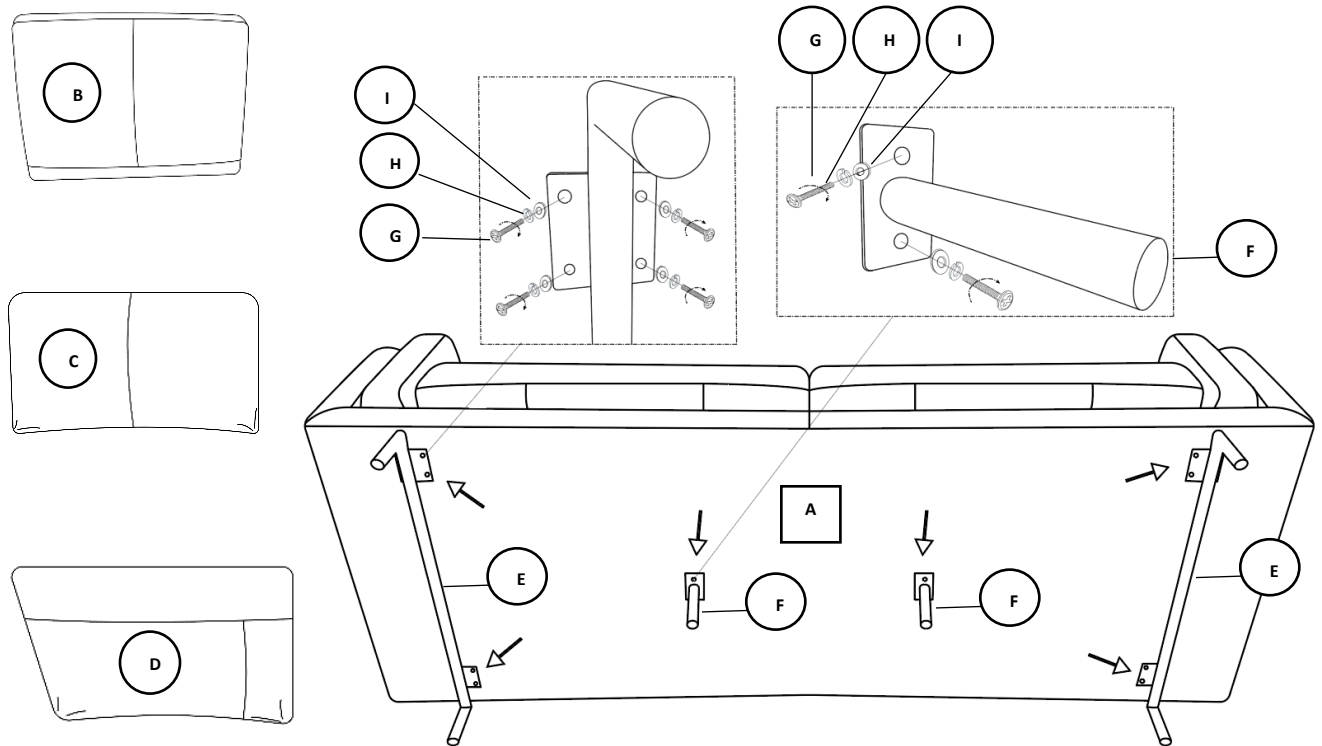
Before Assembly

- Remove all parts and hardware from the box. Place all items on a carpeted or scratch-free work surface, as this will avoid damaging parts during assembly.
- The shipping box can provide an ideal work surface if none is available.
- Use the components and hardware lists below to identify, inventory and separate each of the hardware and components included.
- To avoid accidentally discarding small components or hardware, do not dispose of any packaging or contents of the shipping carton until assembly is complete.
- **DO NOT USE** power tools unless it is explicitly identified in this manual as required for use during assembly. Power tools can damage the fasteners, hardware and/or components.
- Do not fully tighten all fasteners / screws until all parts are in place. Failure to follow these instructions may cause the fasteners / screws to misalign during assembly.

Care & Use

- Leather can fade when exposed to direct sunlight over a long period of time.
- Keep your leather fresh and moisturized using leather conditioners and/or wipes every few months.
- Avoid cleaners that use chemical products. Many of these are harsh and not safe for use on leather.
- Leather is a natural product and any stress may result in tears.
- Avoid sitting in one area and use the seating areas evenly for even wear.
- Leather is not resistant to animals. Allowing pets on your leather furniture is not recommended.
- If pillow cushions are sewn to the frame, any pulling, or tugging may result in a tear.
- It is important to remember due to its genuine features, leather has natural wrinkles as well as color and texture variations

Package Contents



Component	Description	Qty	Component	Description	Qty
A	Seat Base	1	F	Support Legs	2
B	Seat Cushion	2	G	Phillips Head Bolts (Φ12 M6 x 50MM)	20
C	Back Cushion	2	H	Spring Washer	20
D	Arm Cushion	2	I	Flat Washer	20
E	Black Matte Metal Legs	2			

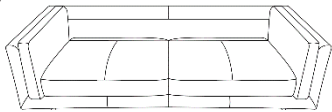
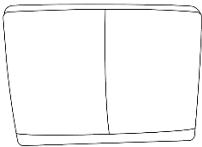
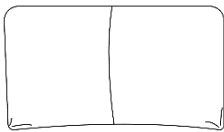

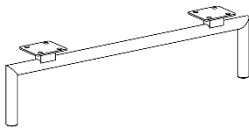
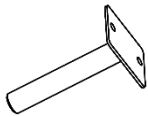
Need Assistance? Visit us at: [samsclub.com](https://www.samsclub.com)

Product Information

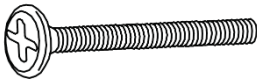

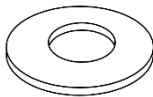
Overall Product Dimensions: 86.5" x 34.25" x 33" (219.71cm x 87.00cm x 83.82cm)
Product Weight Capacity: Supports up to 250 lbs. per seat (635 kg.)

Need Assistance? Visit us at: [samsclub.com](https://www.samsclub.com)

Components

Sofa Base (A) Part No. Qty: 1 	Seat Cushion (B) Part No. Qty: 2 	Back Cushion (C) Part No. Qty: 2 
Arm Cushion (D) Part No. Qty: 2 	Black Matte Metal Legs (E) Part No. Qty: 2 	Support Legs (F) Part No. Qty: 2 

Hardware

Phillips Head Bolts (G) Part No. HW-08-0006 Qty 16 	Spring Washer (H) Part No. HW-09-0008 Qty: 16 	Flat Washer (I) Part No. HW-09-0001 Qty: 16 
---	--	--

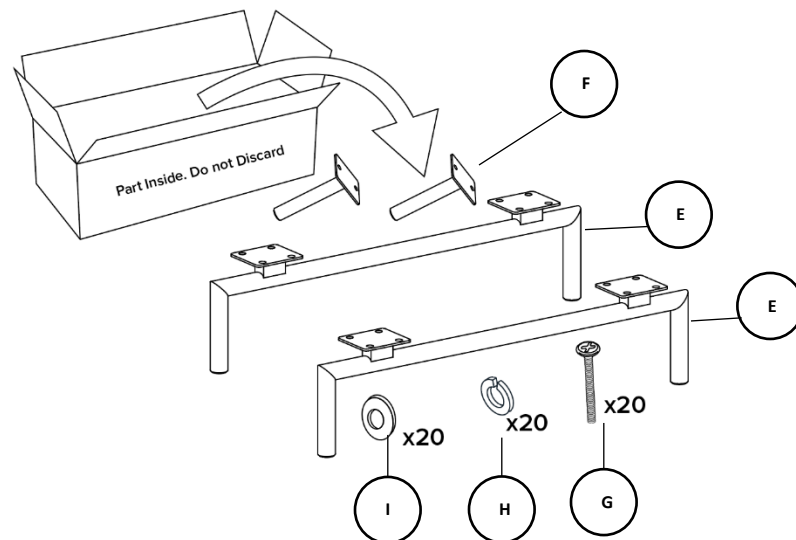
Tools

Phillips Screwdriver (NOT included) 		
---	--	--

Need Assistance? Visit us at: [samsclub.com](https://www.samsclub.com)

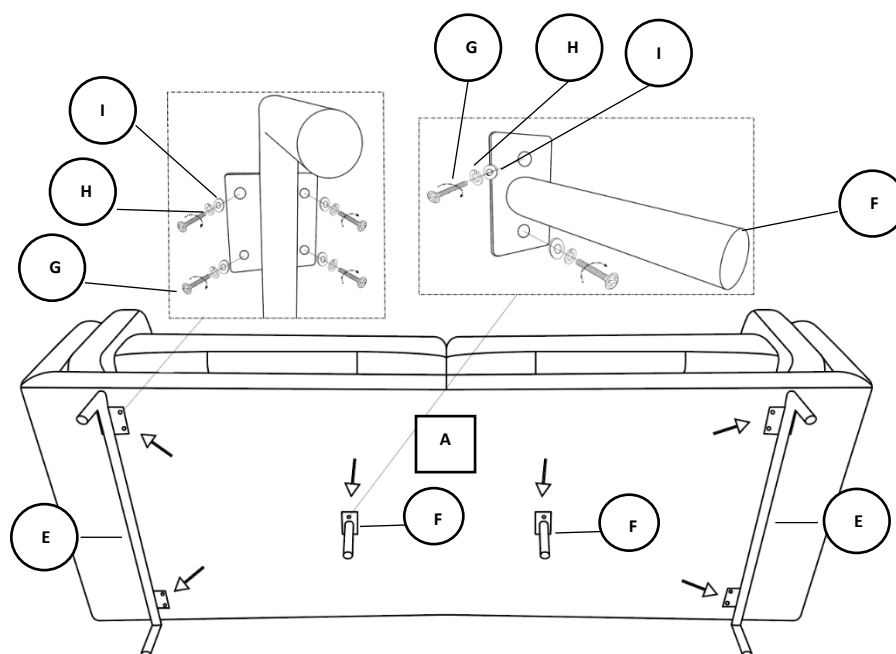
Step 1

Unpack metal legs (E), bolts (G), and washers (H & I) directly from the small carton box.



Step 2

Line up metal legs with holes found on the bottom of the sofa base. Assemble spring washer (H) and flat washer (I) onto Phillips head bolts (G). Use Phillips head screwdriver (not included) to screw bolts and fasten legs (E) to sofa base (A). Repeat steps to attach support legs (F) to sofa base (A). Turn right-side-up onto legs and add cushions. Sofa is ready to use.



Need Assistance? Visit us at: samsclub.com



Warning

- Do not use this product unless all screws and bolts are securely tightened.
- Check that all screws and bolts are secure every three months or as needed.
- Dispose of packing material properly. Do not use plastic cover as head covering as it may cause suffocation.
- Do not use this product as a stepladder.
- Use this product for intended purpose only.
- Intended for residential use only.

Troubleshooting

Problem	Possible Cause	Prevention / Solution
Tilting/Leaning	Surface not level	Check all screws and bolts are secure until level

Care & Use Instructions

Care	Use a soft untreated cloth or vacuum regularly - avoid using detergents or chemical cleaners. Clean up spills immediately. Use a blotting rather than a wiping action.
Use	Avoid placing furniture in direct sunlight. Avoid extreme changes in temperature by arranging furniture away from radiators, heat, and air conditioning units. Protect furniture from animals. Fabric is not resistant to animal stains.

Storage Instructions

Item XXX	<ol style="list-style-type: none">1. Carefully place all components into shipping box and/or provided container tape it shut.2. When not in use, please store your item in a cool, dry place away from sunlight.3. Exposing your item to excessive heat or humidity may damage your item.
----------	---

Warranty Information

Warranty

This product is covered by the Sam's Club Member Satisfaction Guarantee. Please visit samsclub.com for more information.

Questions or Comments?

We would love to hear about your Member's Mark experience! Visit us at:
samsclub.com/membersmarkhelp

NOTE: Please consider recycling all applicable packaging material.

Distributed by Sam's West Inc.
2101 SE Simple Savings Dr.
Bentonville, Arkansas 72716-0745
Made in Vietnam

