



PRO SERIES PELLET GRILL / FIRST USE START UP GUIDE

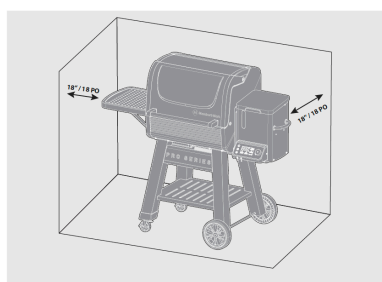
MODEL # P40220



IMPORTANT

Following the correct start-up procedure is critical to ensuring proper performance and safety. Improper start-up can cause many issues from temperature swings, flame outs, and many other issues.

Follow the steps below to get started and ensure optimal performance and safety.



⚠ WARNING

When operating this grill, maintain a MINIMUM distance of 18" (45.72 cm) on all sides, from a dwelling, walls, aluminum siding, windows, fencing and any other combustible material.

⚠ WARNING

When operating this grill under combustibles a MINIMUM of 40" (101.6 cm) is required.

You will need:

● ACCESS TO A **GFCI** PROTECTED OUTDOOR PLUG

● HARDWOOD **BBQ PELLETS**

1

LET'S GET STARTED

Lift the lid



2

Lift the hopper lid, to **load** pellets. **Close** the hopper lid.



3

Plug in the power cord



4

Press and **HOLD** the dial (⏻) until the display turns on.

⚠ **NOTE:** On start up, the display will be in the smoke (🌫) / lowest temperature setting. The smoker setting is factory set to P2. For more information on "P" setting, see page 9 of your manual.

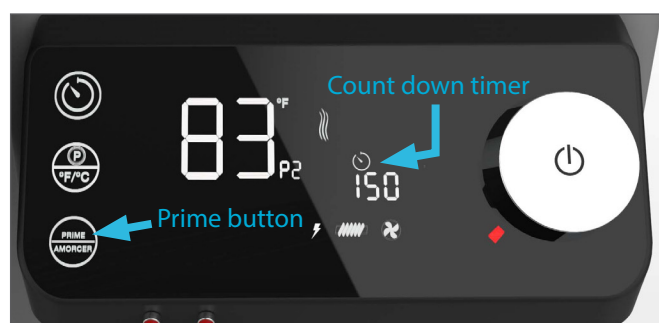


5

FIRST USE ONLY

PRIME THE PELLET GRILL - Press the **Prime button**. The "TIMER" will begin to count down from **150 seconds**. The Prime function will load pellets into the auger and burner pot to build the first fire.

⚠ **IMPORTANT:** DO NOT close the lid. Wait 4-5 minutes for the fire to establish, then close the lid.



6

SET TEMPERATURE - Press the dial to select the "**SET**" function. Turn the dial clockwise to the desired temperature. **Press** the dial to activate the "**SET**" temperature. Preheat for **10-15** minutes.



7

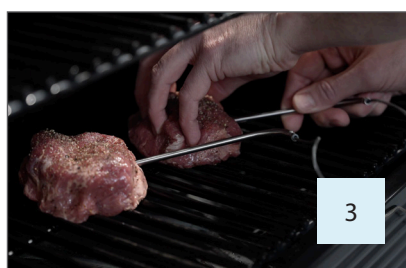
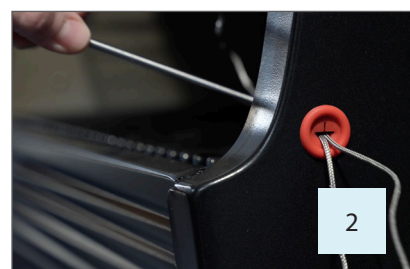
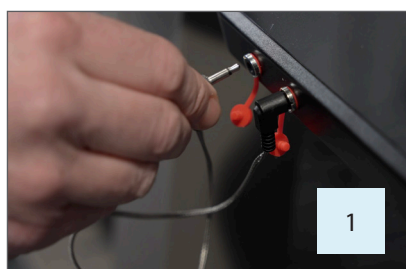
Load food.

8

MEAT PROBE

SET-UP- Monitor doneness throughout your cook to ensure you reach target internal temperature.

- Plug in meat probes (figure 1)
- Feed meat probes into the firebox. Use grill gloves as the grill will be hot. (figure 2)
- Insert meat probes into thickest part of your food. (figure 3)



9

SET TIMER- Press the "TIMER" button (⌚) to select this function. Hours will flash **00:01**. Turn the dial to set the hours. Press the "TIMER" button (⌚) to lock hours.

Minutes will flash **00:01**. Turn the dial to set minutes. **Press** the "TIMER" button to lock minutes.

⚠ **ATTENTION:** Once target temperature is achieved, use grill gloves to remove the meat probes, and to remove food from the pellet grill.



10

SHUT DOWN - ⚠ VERY IMPORTANT: DO NOT UNPLUG THE PELLET GRILL.

Press and hold the dial. The fan will remain on until the pellet grill has sufficiently cooled. Only then should the unit be unplugged.

Scan the QR code to watch the video

